

If you have any questions, or if you think you need to obtain approval for a particular waste discharge, please call your local wastewater treatment plant or stormwater management agency listed below:

ALAMEDA COUNTY

Stormwater

Alameda Countywide
Clean Water Program
(510) 670-5543

Wastewater Treatment

City of Hayward
(510) 881-7969
City of Livermore
(510) 373-5230
City of San Leandro
(510) 577-3434
Dublin San Ramon
Services District
(510) 846-4565
East Bay Municipal
Utility District
(510) 287-1651
Oro Loma Sanitary
District
(510) 276-4700
Union Sanitary District
(510) 790-0100

SAN FRANCISCO COUNTY

Stormwater

Department of Public
Works, BERM
(415) 695-7310

Wastewater Treatment

Department of Public
Works, BERM
(415) 695-73105

SAN MATEO COUNTY

Stormwater

San Mateo Countywide
Stormwater Pollution
Prevention Program
(415) 363-4708

Wastewater Treatment

City of Burlingame
(415) 342-3727
City of Millbrae
(415) 259-2388
City of Pacifica
(415) 738-7348
City of San Mateo
(415) 377-4694
City of South San
Francisco
(415) 877-5979
North San Mateo County
Sanitation District
(415) 991-8200
Sewer Authority Mid-Coastside
(415) 726-0124
South county covered by
South Bayside System
Authority
(415) 594-8411, ext. 141

SANTA CLARA COUNTY

Stormwater

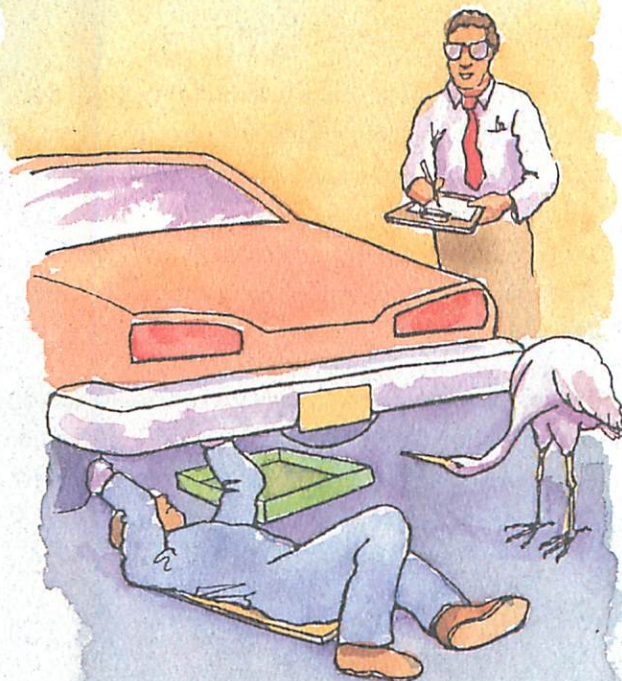
Santa Clara Valley
Nonpoint Source
Pollution Control
Program
(800) 794-2482

Wastewater Treatment

City of Sunnyvale Water
Pollution Control Plant
(408) 730-7260
Palo Alto Regional
Water Quality Control Plant
(415) 329-2598
San Jose/Santa Clara
Water Pollution Control Plant
(408) 945-5307

GUIDELINES FOR VEHICLE SERVICE FACILITIES

Tips for Managers of Vehicle Service Facilities



Vehicle Shop Practices for a Cleaner Bay

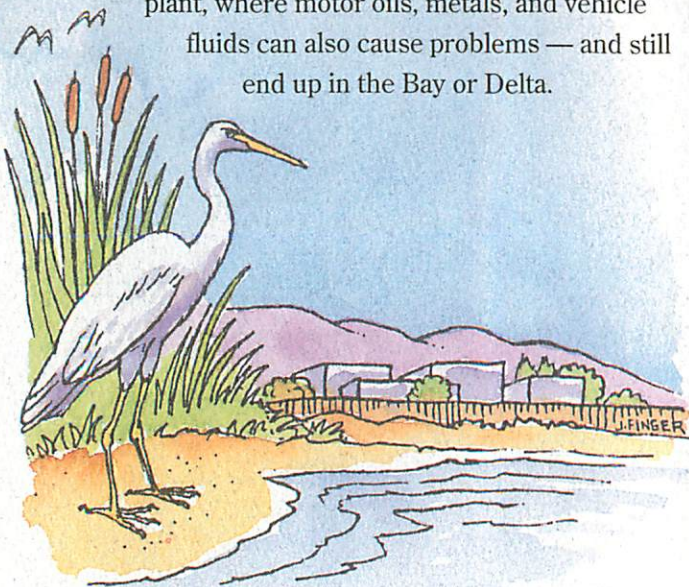
PRODUCED AND DISTRIBUTED BY BAY AREA
WASTEWATER TREATMENT PLANTS AND
STORMWATER MANAGEMENT AGENCIES

Vehicle Service Shops Can Make a Difference.

Vehicle service employees can help protect water quality in important ways by following the guidelines for shop practices and maintenance in this brochure. We hope you will join with us and businesses throughout the Bay Area as we work together to safeguard the health of the Bay.

Outside your shop, storm drains carry runoff from streets, gutters, and parking lots directly to local creeks and the San Francisco Bay and Delta with no waste treatment. When oils, dissolved metals, and other vehicle fluids reach a creek or the Bay they threaten water quality and the health of wildlife in our waterways.

Inside the shop, most drains carry waste into a sanitary sewer and on to the local wastewater treatment plant, where motor oils, metals, and vehicle fluids can also cause problems — and still end up in the Bay or Delta.



How You Can Help!

Storage/Recycling/Treatment

Appropriate storage protects your shop from hazardous spills. Recycling and properly treating wastes protects the environment and saves you money. Consult your local hazardous waste agency for details.

- Separate waste solvents, paints, oil filters, anti-freeze, motor oil, batteries, and lubricants to increase your waste recycling/disposal options and reduce costs.
- Keep lids on waste barrels and containers, and store them indoors or under cover.
- Properly maintain and service all treatment devices (such as oil/water separators).
- Inspect equipment frequently for malfunctioning parts, leaks, and accumulation of pollutants such as oil and grease.

Purchasing

Purchasing decisions have a direct and long-term impact on the products used and disposed of by your shop. Make pollution prevention easier and reduce costs and liability by controlling the types and amounts of products purchased.

- Minimize inventory by purchasing only as much product as you will need in the foreseeable future.

Education and Training

Your success in following these guidelines depends on an effective training program.

- Label both drains inside and outside your shop to indicate whether they flow to an oil/water separator, directly to the sewer, or to a storm drain.
- Review the guidelines in these pamphlets annually with all employees, and with all new hires. If you need more materials, call your local wastewater treatment plant or stormwater management agency