

If you have any questions, or if you think you need to obtain approval for a particular waste discharge, please call your local wastewater treatment plant or stormwater management agency listed below:

**ALAMEDA COUNTY**

**Stormwater**

Alameda Countywide  
Clean Water Program  
(510) 670-5543

**Wastewater Treatment**

City of Hayward  
(510) 881-7969  
City of Livermore  
(510) 373-5230  
City of San Leandro  
(510) 577-3434  
Dublin San Ramon Services District  
(510) 846-4565  
East Bay Municipal Utility District  
(510) 287-1651  
Oro Loma Sanitary District  
(510) 276-4700  
Union Sanitary District  
(510) 790-0100

**CONTRA COSTA COUNTY**

**Stormwater**

Contra Costa Clean Water Program  
(510) 313-2364

**Wastewater Treatment**

Central Contra Costa Sanitary District  
(510) 229-7288  
City of Hercules  
(510) 799-8242  
City of Pinole  
(510) 724-8963  
City of Richmond  
(510) 412-2014  
Rodeo Sanitation District  
(510) 799-2970  
Delta Diablo Sanitation District  
(510) 778-4040  
Dublin San Ramon Services District  
(510) 846-4565  
Mt. View Sanitary District  
(510) 228-5635  
West County Wastewater District  
(510) 237-6603

**MARIN COUNTY**

**Stormwater**

Marin County Stormwater  
Pollution Prevention Program  
(415) 485-3363

**Wastewater Treatment**

Central Marin Sanitation Agency  
(415) 459-1455  
Las Gallinas Valley Sanitary District  
(415) 472-1734

**Marin County Sanitary District #5**

(415) 435-1501  
Novato Sanitary District  
(415) 892-1694  
Sausalito-Marín City  
Sanitary District  
(415) 332-0244  
Sewerage Agency of Southern Marin  
(415) 388-2402

**NAPA COUNTY**

**Wastewater Treatment**

City of Calistoga  
(707) 942-2828  
City of St. Helena  
(707) 963-2741  
Napa Sanitation District  
(707) 258-6024  
Town of Yountville  
(707) 944-2988

**SAN FRANCISCO COUNTY**

**Stormwater**

Department of Public Works, BERM  
(415) 695-7310

**Wastewater Treatment**

Department of Public Works, BERM  
(415) 695-73105

**SOLANO COUNTY**

**Stormwater**

Fairfield-Suisun Urban Runoff  
Management Program  
(707) 429-8930  
Vallejo Sanitation and Flood  
Control District  
(707) 644-8949, ext. 281

**Wastewater Treatment**

City of Benicia  
(707) 746-1098  
Fairfield-Suisun Sewer District  
(707) 429-8930  
Vallejo Sanitation and  
Flood Control District  
(707) 644-8949, ext. 281

**SONOMA COUNTY**

**Wastewater Treatment**

City of Petaluma  
(707) 762-5892  
Sonoma Valley County  
Sanitation District  
(707) 938-4052

**GUIDELINES FOR VEHICLE  
SERVICE FACILITIES**

# Engine & Parts Cleaning & Radiator Flushing



## Vehicle Shop Practices for a Cleaner Bay

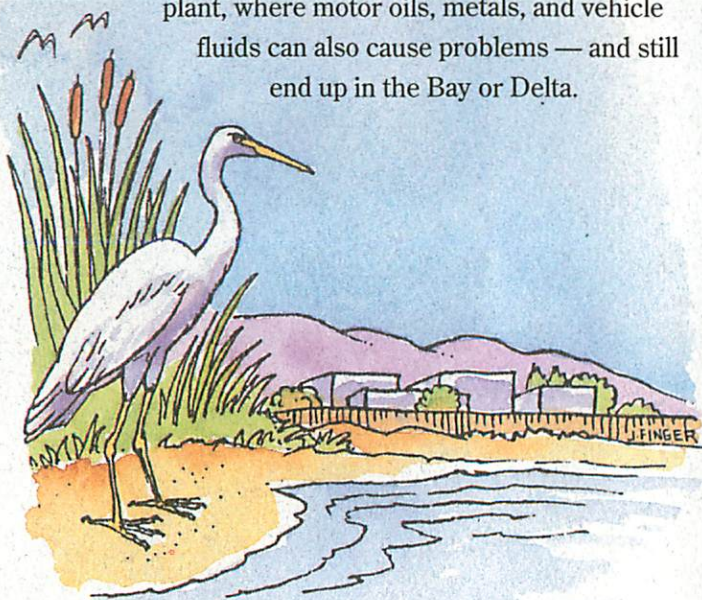
PRODUCED AND DISTRIBUTED BY BAY AREA  
WASTEWATER TREATMENT PLANTS AND  
STORMWATER MANAGEMENT AGENCIES

## Vehicle Service Shops Can Make a Difference.

Vehicle service employees can help protect water quality in important ways by following the guidelines for shop practices and maintenance in this brochure. We hope you will join with us and businesses throughout the Bay Area as we work together to safeguard the health of the Bay.

Outside your shop, storm drains carry runoff from streets, gutters, and parking lots directly to local creeks and the San Francisco Bay and Delta with no waste treatment. When oils, dissolved metals, and other vehicle fluids reach a creek or the Bay they threaten water quality and the health of wildlife in our waterways.

Inside the shop, most drains carry waste into a sanitary sewer and on to the local wastewater treatment plant, where motor oils, metals, and vehicle fluids can also cause problems — and still end up in the Bay or Delta.



## How You Can Help!

**Solvents are hazardous to employees and can ignite in sewers.**

- ❑ Never discharge petroleum-based solvents and radiator fluids to the sewer or storm drain. Instead, recycle them.
- ❑ Make sure no wastewater from engine or parts cleaning or steam cleaning is discharged where it may flow to a street, gutter, or storm drain.
- ❑ Obtain approval from the wastewater treatment plant before discharging cleaning solutions or rinsewater into the sanitary sewer.
- ❑ Designate specific areas for engine, parts, or radiator cleaning. These areas should be indoors and convenient to treatment devices. Do not wash or rinse parts outdoors.

