

If you have any questions, or if you think you need to obtain approval for a particular waste discharge, please call your local wastewater treatment plant or stormwater management agency listed below:

**ALAMEDA COUNTY**

**Stormwater**  
Alameda Countywide  
Clean Water Program  
(510) 670-5543

**Wastewater Treatment**

City of Hayward  
(510) 881-7969  
City of Livermore  
(510) 373-5230  
City of San Leandro  
(510) 577-3434  
Dublin San Ramon  
Services District  
(510) 846-4565  
East Bay Municipal  
Utility District  
(510) 287-1651  
Oro Loma Sanitary  
District  
(510) 276-4700  
Union Sanitary District  
(510) 790-0100

**SAN FRANCISCO COUNTY**

**Stormwater**  
Department of Public  
Works, BERM  
(415) 695-7310

**Wastewater Treatment**

Department of Public  
Works, BERM  
(415) 695-73105

**SAN MATEO COUNTY**

**Stormwater**  
San Mateo Countywide  
Stormwater Pollution  
Prevention Program  
(415) 363-4708

**Wastewater Treatment**

City of Burlingame  
(415) 342-3727  
City of Millbrae  
(415) 259-2388  
City of Pacifica  
(415) 738-7348  
City of San Mateo  
(415) 377-4694  
City of South San  
Francisco  
(415) 877-5979  
North San Mateo County  
Sanitation District  
(415) 991-8200  
Sewer Authority Mid-Coastside  
(415) 726-0124  
South county covered by  
South Bayside System  
Authority  
(415) 594-8411, ext. 141

**SANTA CLARA COUNTY**

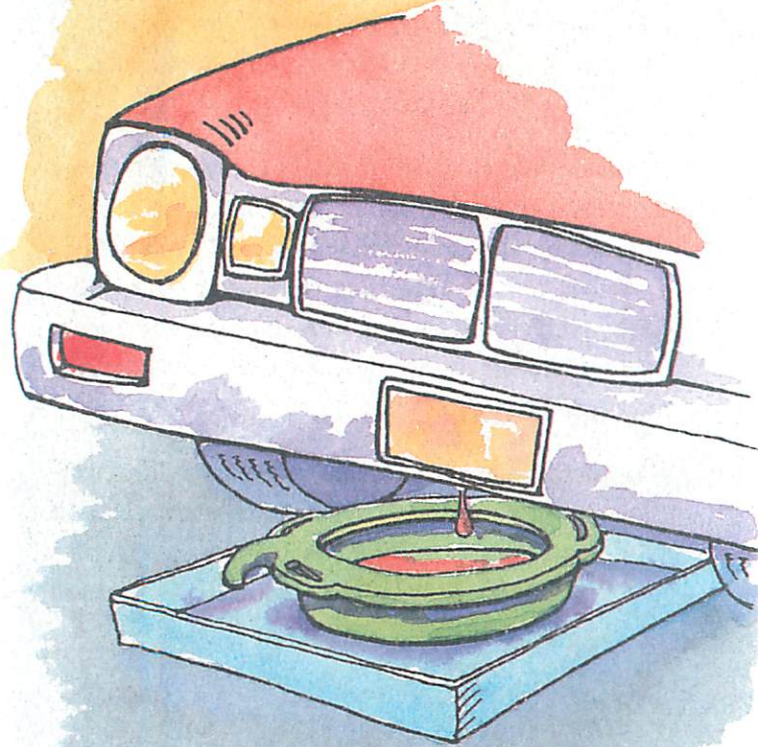
**Stormwater**  
Santa Clara Valley  
Nonpoint Source  
Pollution Control  
Program  
(800) 794-2482

**Wastewater Treatment**

City of Sunnyvale Water  
Pollution Control Plant  
(408) 730-7260  
Palo Alto Regional  
Water Quality Control Plant  
(415) 329-2598  
San Jose/Santa Clara  
Water Pollution Control Plant  
(408) 945-5307

**GUIDELINES FOR VEHICLE  
SERVICE FACILITIES**

# Changing Oil and Other Fluids



## Vehicle Shop Practices for a Cleaner Bay

PRODUCED AND DISTRIBUTED BY BAY AREA  
WASTEWATER TREATMENT PLANTS AND  
STORMWATER MANAGEMENT AGENCIES

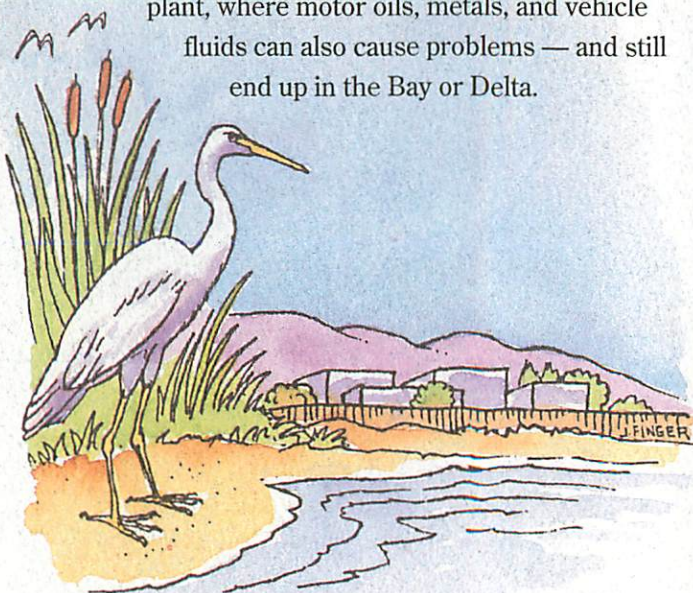
FUNDED IN PART BY THE  
CALIFORNIA INTEGRATED WASTE MANAGEMENT BOARD

## Vehicle Service Shops Can Make a Difference.

Vehicle service employees can help protect water quality in important ways by following the guidelines for shop practices and maintenance in this brochure. We hope you will join with us and businesses throughout the Bay Area as we work together to safeguard the health of the Bay.

Outside your shop, storm drains carry runoff from streets, gutters, and parking lots directly to local creeks and the San Francisco Bay and Delta with no waste treatment. When oils, dissolved metals, and other vehicle fluids reach a creek or the Bay they threaten water quality and the health of wildlife in our waterways.

Inside the shop, most drains carry waste into a sanitary sewer and on to the local wastewater treatment plant, where motor oils, metals, and vehicle fluids can also cause problems — and still end up in the Bay or Delta.



## How You Can Help!

**Waste oil, antifreeze, and other vehicle fluids contain toxic chemicals and heavy metals from wear and tear of engine parts.**

- Drain vehicle fluids** indoors and only on non-porous floors.
- Always use a drip pan** when draining fluids.
- Transfer fluids** drained from vehicles to a designated waste storage area as soon as possible.
- Never pour vehicle fluids** or any hazardous wastes into sinks, toilets, floor drains, outside storm drains, or put in the garbage.
- Prevent spills** from reaching storm drains:
  - Work over an absorbent mat
  - Cover nearby storm drains
  - Work in a bermed area, or
  - Use absorbent socks to create a bermed area
- Use absorbents or rags** to clean up any spilled oil or fluids.

