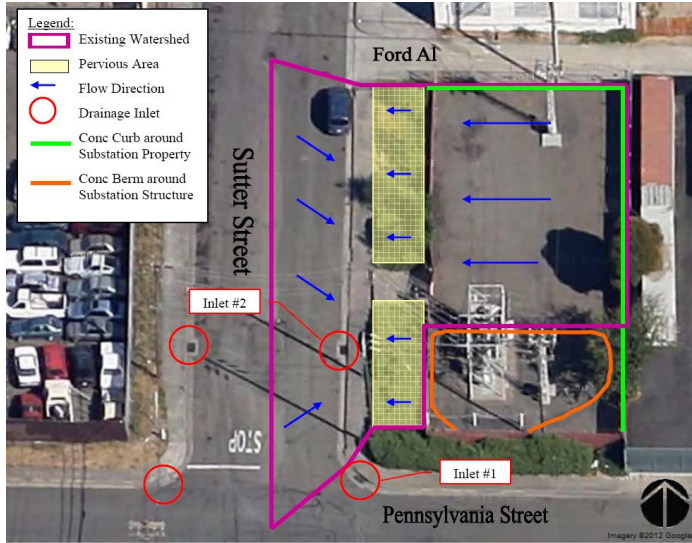
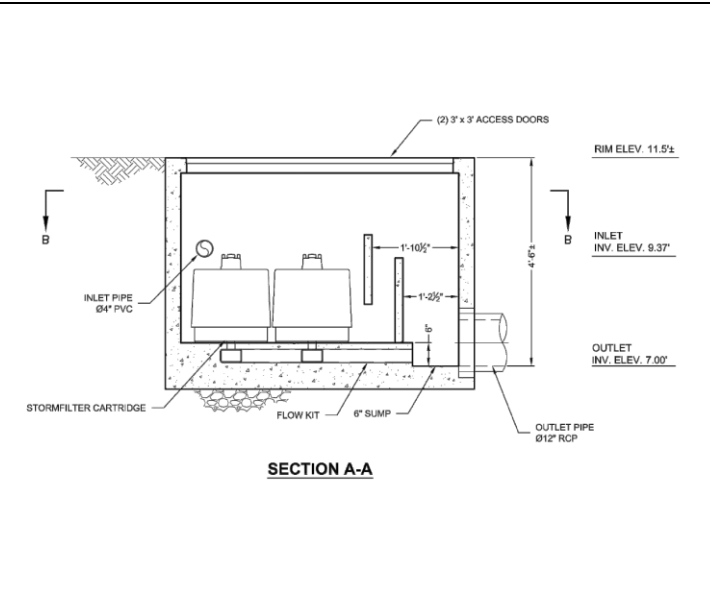


TASK 5: URBAN RUNOFF TREATMENT RETROFITS CITY OF VALLEJO PG&E SUBSTATION PROJECT



BMP Type:	Media Filter
Location:	East side of Sutter Street at Pennsylvania Street in Vallejo, California
Drainage Area:	0.13 acres
Construction Completed:	September 2014
Total Design and Construction Cost:	\$161,900

Description:	Precast Contech StormFilters ®
Number of Cartridges:	2
Cartridge Specs:	18" CSF ®/GAC media, siphon-actuated, radial-flow, self-cleaning. Media contact time at least 37 seconds. Volumetric flow rate 6 GPM/CF of media.
Sizing:	2 cartridges required for drainage area.



Monitoring Locations:	Directly at the media filter
Monitored Dates:	10/31/14, 11/20/14, 4/7/15
Influent Sampling:	Influent pipe upstream of media filter.
Effluent Sampling:	Effluent pipe.