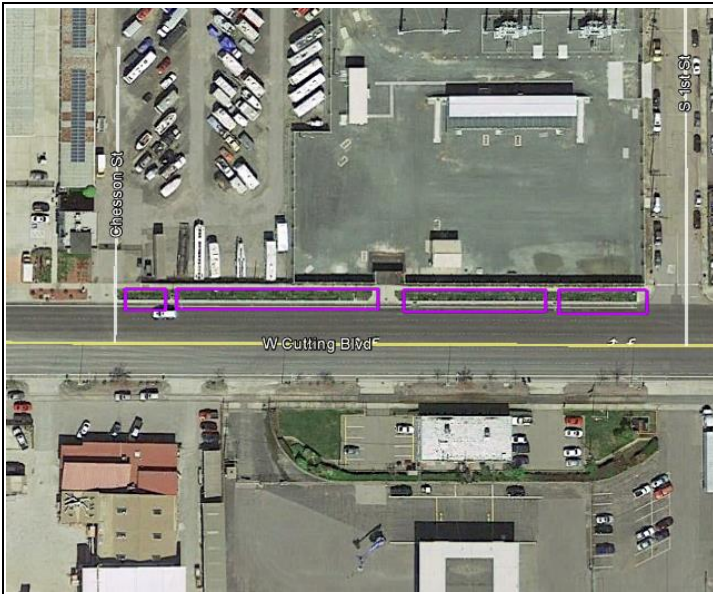
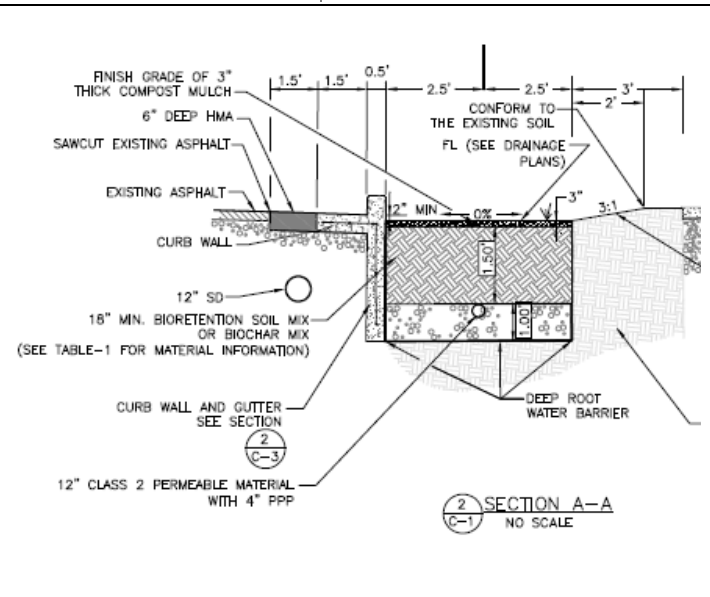


TASK 5: URBAN RUNOFF TREATMENT RETROFITS PG&E SUBSTATION PROJECT—1ST AND CUTTING



BMP Type:	Bioretention
Location:	S. 1 st St and W. Cutting Blvd, Richmond, CA
Drainage Area:	1.66 acres
Construction Completed:	September 2014
Total Design and Construction Cost:	\$466,305

Description:	Bioretention with curb cuts.
Number of Cells:	4 unlined cells. Cells 1 & 2: no underdrain. Cells 3 & 4: underdrain.
Media Type & Depth:	18-inch media depth. Cells 1-3: 60% sand, 40% compost. Cell 4: 75% soil mix, 25% biochar.
Sizing:	Cells 3 & 4: 4% of impervious area. Cells 1 & 2: less than 4% due to utility constraints.
Ponding Depth:	6 inches (based on design drawings)



Monitoring Locations:	Cell 1: influent only. Cell 2: visual observations only. Cells 3 & 4: influent and effluent.
Monitored Dates:	11/22/2014, 12/2/2014, 12/15/2014, 2/6/2015, 4/7/2015, 4/25/2015, 1/5/2016, 1/13/2016, 1/17/2016
Influent Sampling:	Curb immediately upstream of cell.
Effluent Sampling:	PVC pipes that discharge flow from cell's underdrains into drop inlets.