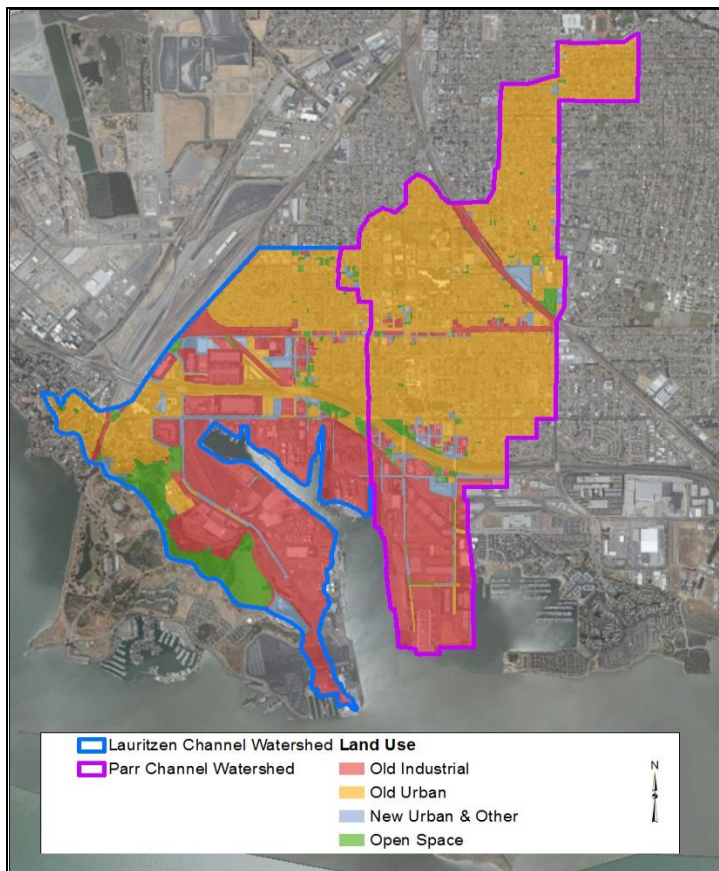


TASK 3: SOURCE PROPERTY IDENTIFICATION AND REFERRAL

LAURITZEN CHANNEL AND PARR CHANNEL WATERSHEDS



Watershed / Monitoring Information		
Watershed	Lauritzen Channel	Parr Channel
Location	Richmond, Contra Costa County	
Watershed Area	3.8	4.3
Percent Old Industrial Land Use	48%	23%
Percent Old Urban Land Use	35%	70%
Historic Rail	3,836 meters	3,397 meters
Current Rail	9,770 meters	9,195 meters
Soil/Sediment Samples Collected in Public ROW	6	8

Results

Watershed	Lauritzen Channel	Parr Channel
General Facility Uses	Appliance recycling	Foundry, scrap metal
Address	135 Cutting Blvd, Richmond, CA 94804	600 South 4th Street, Richmond, CA 94804
Area (acres)	0.49	18.22
Samples Collected	2	4
PCBs Concentration (mg/kg)	0.33 – 0.37	0.93 – 1.5
Mercury Concentration (mg/kg)	0.38 – 0.61	1.4 – 1.9

