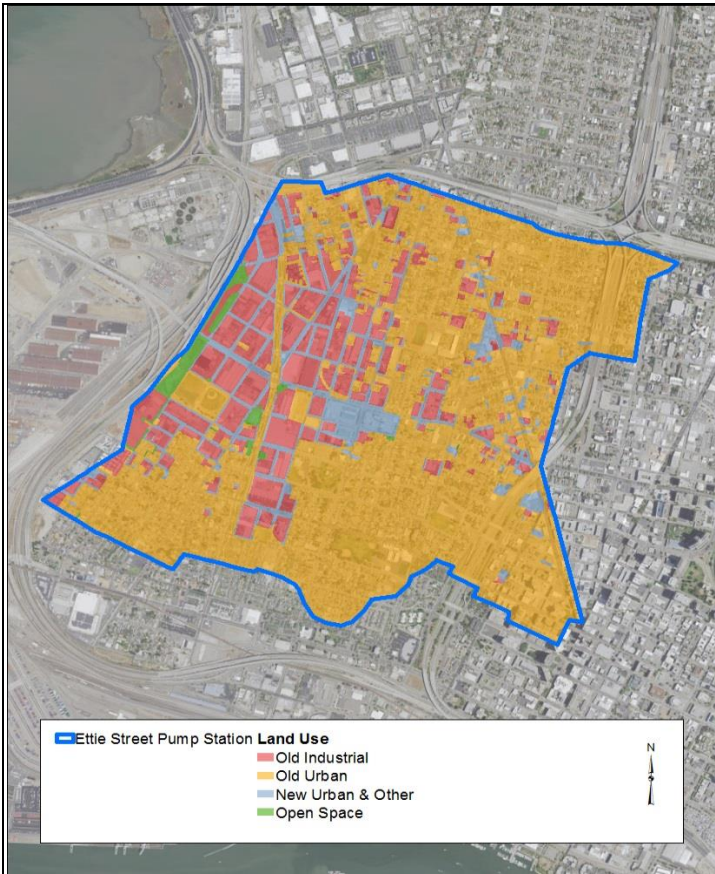


TASK 3: SOURCE PROPERTY IDENTIFICATION AND REFERRAL

ETTIE STREET PUMP STATION WATERSHED



Watershed / Monitoring Information	
Location	Oakland, Alameda County
Watershed Area	4.9 km ²
Percent Old Industrial Land Use	19%
Percent Old Urban Land Use	69%
Historic Rail	4,226 meters
Current Rail	7,140 meters
Soil/Sediment Samples Collected in Public ROW	37

Results

General Facility Uses	Appliance recycling	Foundry, scrap metal	Paint contractor
Addresses	3438 Helen St., Oakland, CA 94608	2601, 2730, and 2800 Peralta St.; 2711 and 2641 Union St.; 1282 26th St.; 2628 Poplar St., Oakland, CA 94608	2868 Hannah St. and 2847 Peralta St., Oakland, CA 94608
Area (acres)	0.34	7.98	1.93
Samples Collected	1	6	3
PCBs Concentration (mg/kg)	3.37	0.56 – 5.7	0.39 – 1.3
Mercury Concentration (mg/kg)	0.55	0.51 – 1.6	0.37 – 0.69

